

The background of the advertisement is a photograph of a contemporary living space. On the right, a dark, rectangular wall-mounted gas fire is lit, showing a blue flame base and yellow-orange fire. To the left, a large, leafy green plant sits on a white surface. In the foreground, the backs of two dark blue upholstered chairs and a portion of a light-colored table are visible. A bright light source from the left casts a sharp shadow of the plant and the fire onto the white wall.

ESSE

.....

WALL-MOUNTED  
GAS FIRES

.....

WARMING HOMES  
BEAUTIFULLY SINCE 1854



.....  
At ESSE, we've been hand-crafting high  
quality stoves in Britain for over 160 years.  
Everything we've learned about keeping homes  
warm, beautifully, has been put into this  
collection of sleek gas fires – which, thanks to  
their advanced flueless design, offers you  
almost 100% energy-efficiency combined with  
complete “hang it anywhere” freedom.





WHY AN ESSE FLUELESS GAS FIRE?

You may think that ESSE flueless gas fires sound almost too good to be true. They look stunning in any living space, combining modern minimalist styling with the timeless appeal of warm and welcoming flames over a bed of glowing embers. They come in different sizes and power outputs, providing all the heat you could possibly want. Also, because none of it is wasted up the chimney, they are virtually 100% energy-efficient.

So where’s the catch? There really isn’t one. Our advanced catalytic technology, along with those 160 plus years of stove-building know-how, has enabled us to create a range of gas fires that achieve the seemingly impossible, with effortless style.

We explain how the technology works later in this brochure; but for now, we just need to emphasise that it’s completely safe, and gives you total freedom to hang your

ESSE gas fire exactly where you want it\*. Up high, as an unmissably eye-catching centrepiece; down low, for a more traditional fireplace feel; or even, as you’ll see, in a cosy corner.

Which ESSE flueless gas fire is right for your home? We hope you’ll find all the information you need in this brochure. But if there’s anything else you’d like to know, we’d be very happy to hear from you.



48 Oval in black glass with black backing

\*There are some placement restrictions when installing one of our ESSE gas fires. As a general rule, these products cannot be placed in bedrooms, bathrooms or basements or any room with restricted air flow, excessive condensation or long-term sleeping quarters.

160  
YEARS  
HERITAGE  
21<sup>ST</sup>  
CENTURY  
STYLE



ANY WALL  
ANYWHERE

OUR FLUELESS TECHNOLOGY  
MEANS THAT YOU CAN  
POSITION YOUR ESSE WHERE  
YOU WANT

FUTURE-PROOFED  
HOME  
HEATING

BUILT BY HAND, AT OUR  
HOME IN BARNOLDSWICK,  
LANCASHIRE

100%  
ENERGY  
EFFICIENT

WITH ZERO  
WARMTH WASTED

INSTANT  
CONTROL

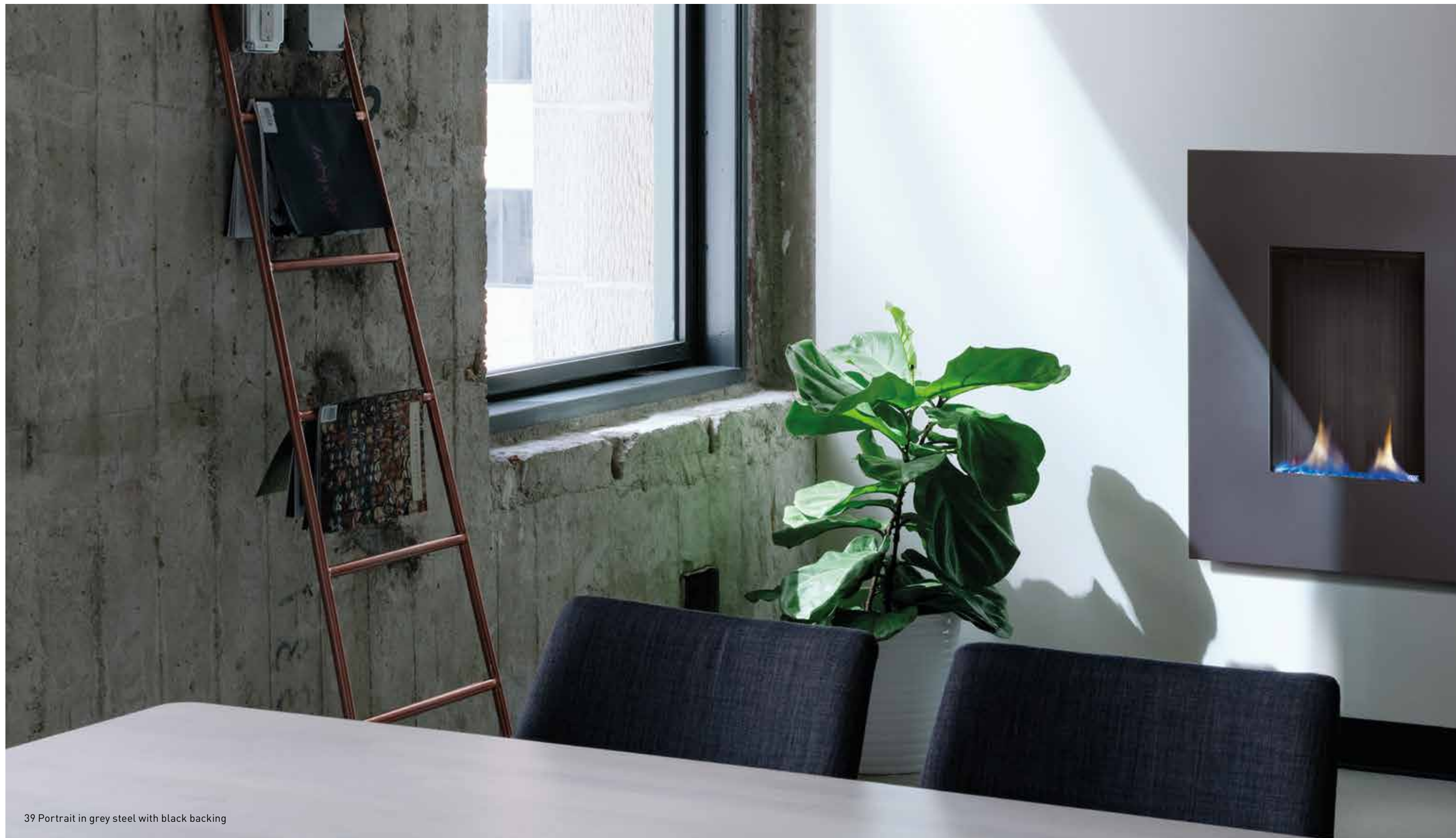
— FROM —  
THE COMFORT OF  
YOUR ARMCHAIR  
(WITH OPTIONAL  
REMOTE CONTROL)



NO FLUE  
REQUIRED

THANKS TO  
ESSE  
STATE-OF-THE-ART  
CATALYTIC TECHNOLOGY

Picture this: it's chilly outside; inside, this gorgeous upright gas fire is not just adding a touch of glamour to your home, but effortlessly providing 2.4 kW of instantly controllable warmth to every corner of your living space. And as you'll see overleaf, this really is a fire designed to fit in perfectly, anywhere.





39 Portrait in grey steel with vermiculite backing

To complement your design scheme, our 39 Portrait model is available in black glass, or with a steel surround in a choice of seven colours. For even greater versatility in terms of positioning, we also offer an optional floor-mounting stand and corner grill.



Optional floor stand



Corner model with optional floor stand



Corner grill

COLOUR OPTIONS



Black Glass



Black Steel



White Steel



Grey Steel



Ruby Steel



Bronze Steel



Gold Steel



Iron Ore

BACKING OPTIONS



Vermiculite



Black

MODEL	39 PORTRAIT
Gas – Natural or LPG	Yes
Piezo spark ignition	Yes
Auto safety shut off	Yes
Fuel effect	Embers
Additional room vent	Yes
Heat output max/min kW	2.4/1.1
Flueless with CAT	Yes

Heat output 2.4 kW; Efficiency 100%



ESSE 5 Year Product Guarantee excluding consumables, subject to terms and conditions. Visit [esse.com](https://www.esse.com) for more information.



All flueless appliances require an air vent to the room, so you'll need to discuss your heating requirements with a registered gas engineer.



Remote control is also available as an option, enabling you to adjust the flames at the touch of a button.



Flueless gas fire technology means that our fires can be installed in a variety of positions on the wall and around the room.



All ESSE gas appliances are available in natural gas and in LPG.



# 41

LANDSCAPE

At first glance, it may be hard to believe that this minor masterpiece of contemporary design has much in common with the cast-iron stoves we started building back in the days of Queen Victoria. But like every ESSE, our 41 Landscape model is beautifully built, technologically advanced and supremely functional – wherever you decide to hang it in your home. Whether you position it at eye level on the wall or positioned at floor level on one of our floor stands, your ESSE gas fire is guaranteed to look the part.

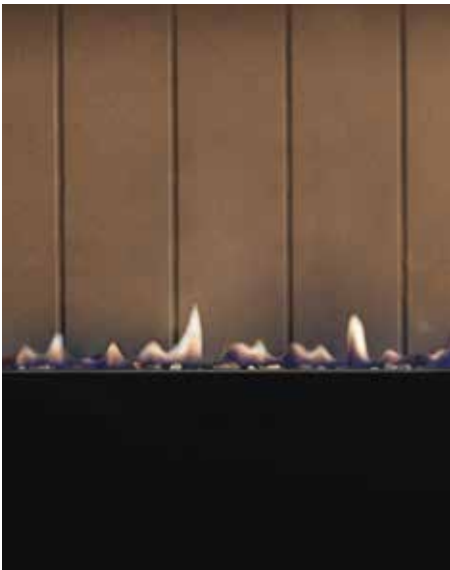


41 Landscape in black glass with vermiculite backing

With its slimline profile and elegant widescreen looks, it's easy to see how our 41 Landscape model would perfectly complement any contemporary living space. But timeless classic design like this has a way of making itself at home in any surroundings, modern or more traditional – particularly when you can choose from seven colours of steel surround, in addition to the original black glass.



41 Landscape in black glass with vermiculite backing

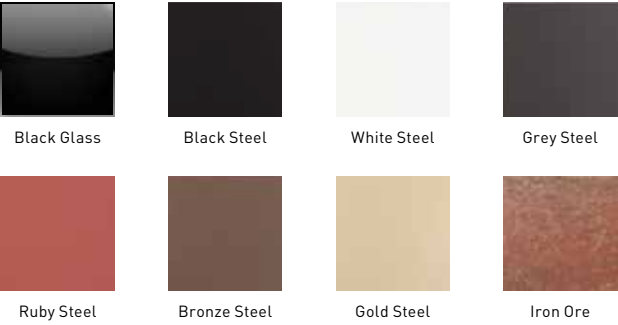


Detail on the backplate

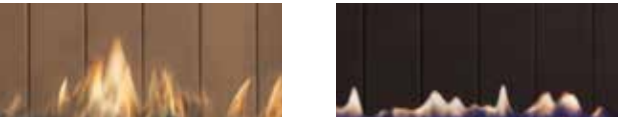


Floor option with base

COLOUR OPTIONS



BACKING OPTIONS



Vermiculite

Black

MODEL	41 LANDSCAPE
Gas – Natural or LPG	Yes
Piezo spark ignition	Yes
Auto safety shut off	Yes
Fuel effect	Embers
Additional room vent	Yes
Heat output max/min kW	2.6/1.7
Flueless with CAT	Yes

Heat output 2.6 kW; Efficiency 100%

**5YRS** ESSE 5 Year Product Guarantee excluding consumables, subject to terms and conditions. Visit [esse.com](http://esse.com) for more information.



All flueless appliances require an air vent to the room, so you'll need to discuss your heating requirements with a registered gas engineer.



Remote control is also available as an option, enabling you to adjust the flames at the touch of a button.



Flueless gas fire technology means that our fires can be installed in a variety of positions on the wall and around the room.



All ESSE gas appliances are available in natural gas and in LPG.



# 48

LANDSCAPE

Now things really start to warm up. Because this is our largest and most powerful wall-mounted gas fire, capable of providing a mighty 3.5 kW heat output – as well as a visually stunning focal-point – for your living space. Seen here in cool white glass, our 48 Landscape model oozes understated elegance, taking up very little space with its slimline profile, while being certain to make an enormous impact.



48 Landscape in white glass with black backing





48 Landscape in white glass with black backing

For even greater versatility in terms of your interior design scheme, our 48 Landscape model can sit on a floor stand. And wherever you decide it looks best, its performance will leave nothing to be desired – partly because, as with every ESSE gas fire, heat is distributed evenly, not just from the front and sides but also rising from the top, to warm the whole room, through convection.



Top grill



Floor option with base

COLOUR OPTIONS



Black Glass



White Glass



Black Steel



White Steel



Grey Steel



Ruby Steel



Bronze Steel



Gold Steel



Iron Ore

BACKING OPTIONS



Vermiculite



Black

MODEL	48 LANDSCAPE
Gas – Natural or LPG	Yes
Piezo spark ignition	Yes
Auto safety shut off	Yes
Fuel effect	Embers
Additional room vent	Yes
Heat output max/min kW	3.5/2.3
Flueless with CAT	Yes

Heat output 3.5 kW; Efficiency 100%



ESSE 5 Year Product Guarantee excluding consumables, subject to terms and conditions. Visit [esse.com](https://www.esse.com) for more information.



All flueless appliances require an air vent to the room, so you'll need to discuss your heating requirements with a registered gas engineer.



Remote control is also available as an option, enabling you to adjust the flames at the touch of a button.



Flueless gas fire technology means that our fires can be installed in a variety of positions on the wall and around the room.



All ESSE gas appliances are available in natural gas and in LPG.

# 48

OVAL

Allow the next gas fire you buy to take centre stage in the design of your living space. The Oval is our new 'statement' model, exceptionally powerful with a heat output of 3.5 kW, and even more potent visually: with its classic black glass surround, the Oval is simply the first thing that will draw the eye in any room that it adorns.



48 Oval in black glass with black backing



Like every flueless gas fire in this brochure, the new Oval is not just a pretty face; it's packed with advanced ESSE technology. Safety features, for example, includes an auto shut-off in the event of flame failure, and an oxygen depletion system that constantly monitors the room's air quality. Style with substance; that's the ESSE way.



48 Oval in black glass with black backing



Flame detail

COLOUR OPTION



Black Glass

BACKING OPTIONS



Vermiculite



Black

MODEL	48 OVAL
Gas – Natural or LPG	Yes
Piezo spark ignition	Yes
Auto safety shut off	Yes
Fuel effect	Embers
Additional room vent	Yes
Heat output max/min kW	3.5/2.3
Flueless with CAT	Yes

Heat output 3.5 kW; Efficiency 100%

**5YRS** ESSE 5 Year Product Guarantee excluding consumables, subject to terms and conditions. Visit [esse.com](http://esse.com) for more information.



All flueless appliances require an air vent to the room, so you'll need to discuss your heating requirements with a registered gas engineer.



Remote control is also available as an option, enabling you to adjust the flames at the touch of a button.



Flueless gas fire technology means that our fires can be installed in a variety of positions on the wall and around the room.



All ESSE gas appliances are available in natural gas and in LPG.

Wall-mounted gas fires that can be positioned almost anywhere, with no need for a flue? Thanks to ESSE's advanced catalytic technology, it's not only perfectly possible, but also simple, incredibly clean, economical, and completely safe. Allow us to explain...

At ESSE, we've been making flueless gas fires since 2000. And from the start, we chose to adopt an innovative catalytic technology that 'cleans' all gases as they are burnt – ensuring the only thing emitted by the heater is warm air.

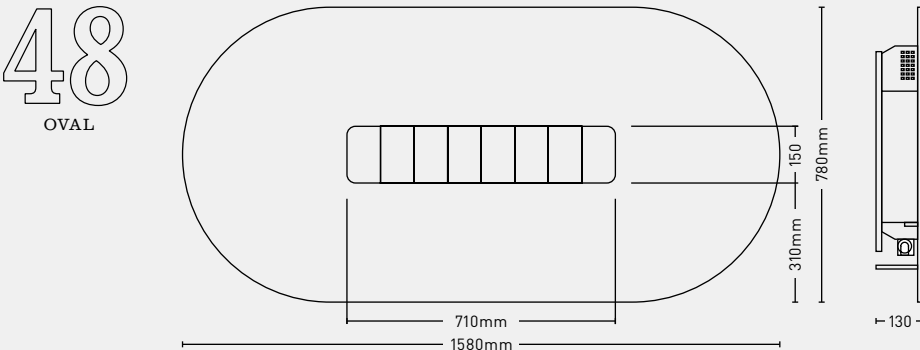
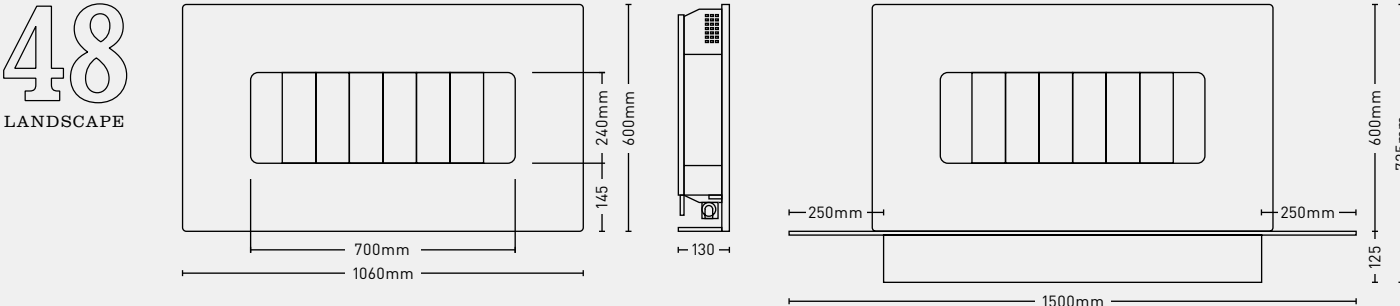
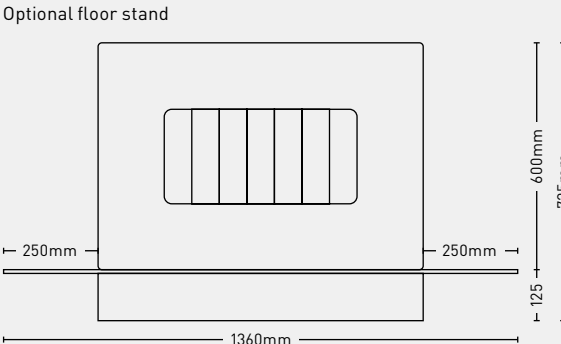
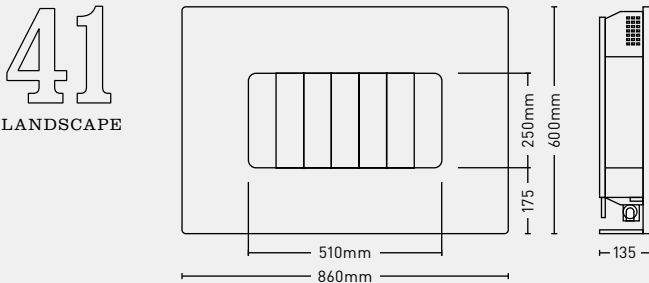
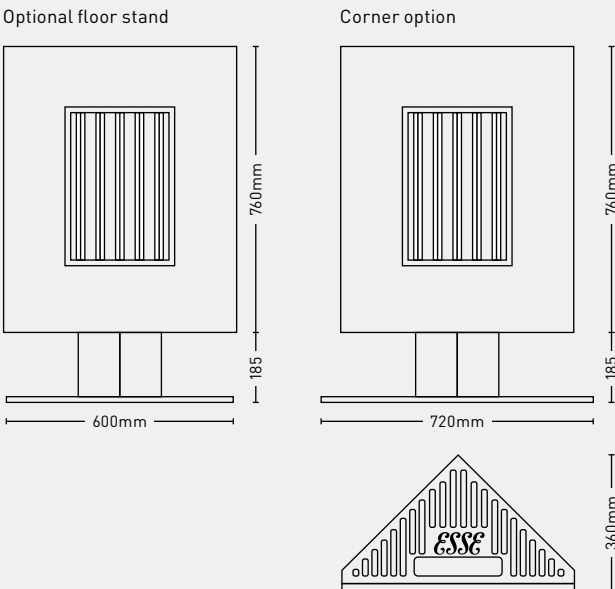
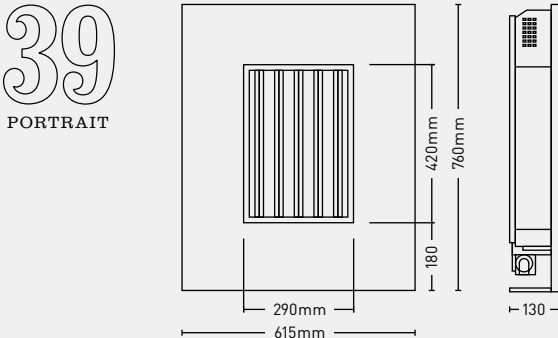
The catalyser we use is effective in dealing with aldehydes produced when burning gas (which you otherwise could smell). The catalyser provides a second level of safety. It can also help to keep the air clean by burning airborne particles such as cooking odours and dust mites.

When gas is burnt, carbon dioxide and water vapour are produced. So the output of your gas fire needs to be matched to the size of room it will heat to ensure these remain within normal levels. Independent tests have confirmed that our flueless gas fires maintain recommended air quality levels at all times.

All our flueless gas fires require a small air vent to the room, to ensure the oxygen used in combustion is replaced. For your complete peace of mind, an oxygen depletion sensor system constantly monitors air quality, and will automatically shut off the fire long before oxygen levels could ever fall to a dangerous level.

## Measurements and technical specification

All our flueless gas fires can be placed anywhere. Try combining it with our additional installation options for even more flexibility.







You don't need a chimney to relax by the fire...

**ESSE**

Contact us

Got a question for us here  
at ESSE? Get in touch.

01282 813235  
[enquiries@esse.com](mailto:enquiries@esse.com)  
[esse.com](http://esse.com)

ESSE Engineering Ltd.  
Ouzledale Foundry  
Long Ing  
Barnoldswick BB18 6BJ

**MADE IN  
BRITAIN** 