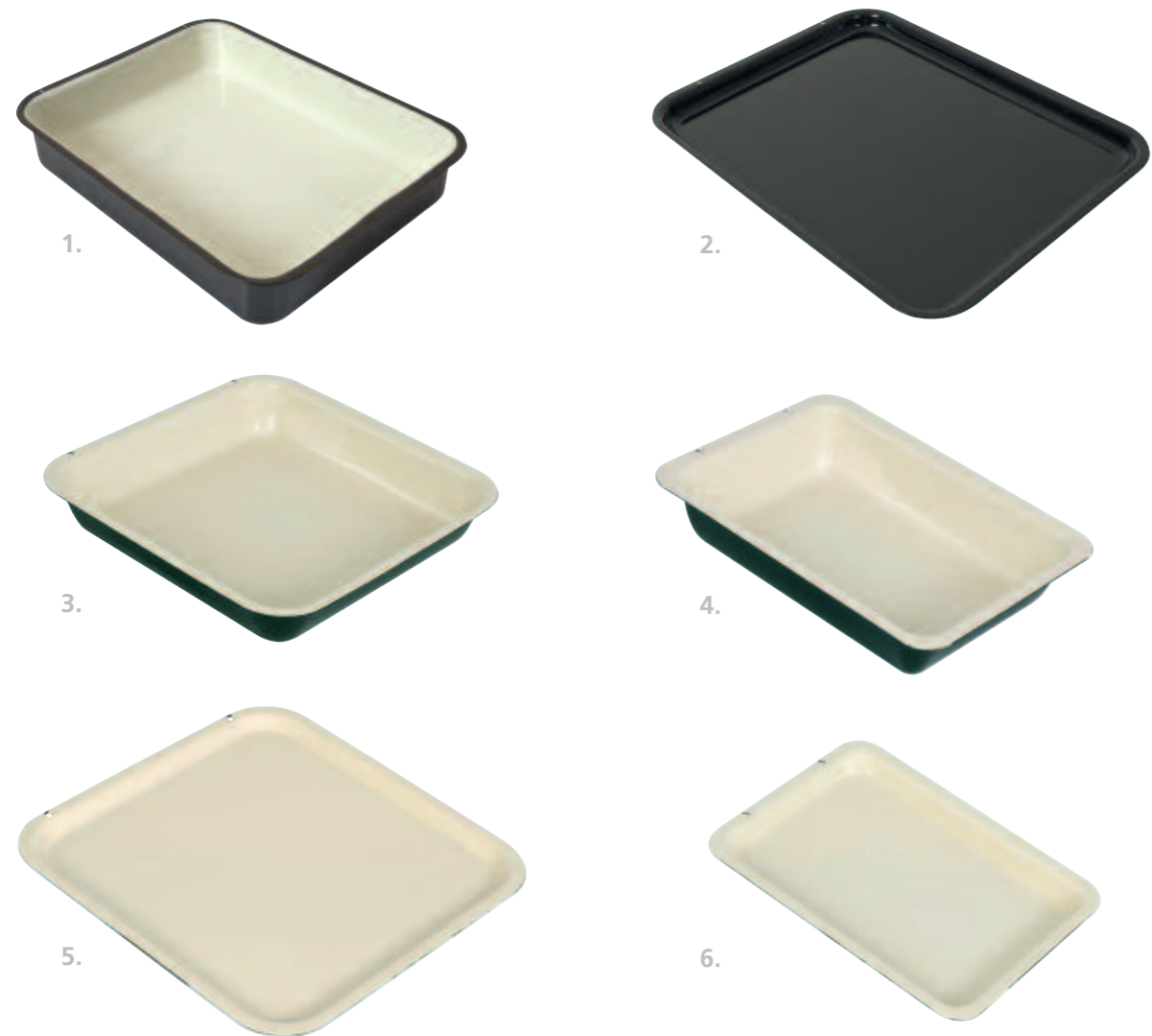


Enamelled Black & Cream Heavy Duty



Enamelled Black & Cream Heavy Duty

- | | | |
|--|--|--|
| 1. Roast dish - Gas / Oil / Wood
Order code: CENT-104 | 3. 12 x 12" dish
Order code: KU-015 | 5. 12 x 12" tray
Order code: KU-017 |
| 2. Roast tray - Gas / Oil / Wood
Order code: CENT-103 | 4. 10 x 7" dish
Order code: KU-016 | 6. 10 x 7" tray
Order code: KU-018 |

Enjoy the best of British food with ESSE range cooker recipes

With the help of River Cottage Head Chef Gill Meller, we are building an online recipe resource for ESSE owners - with an emphasis on seasonal British ingredients and useful cooking tips.

We'd love for users of ESSE bakeware to use this web feature to gain new ideas and get the most out of their bakeware.

The recipe resource will be constantly evolving, so please visit the website regularly to see what Gill has been creating lately.

Gill Meller
River Cottage
Head Chef

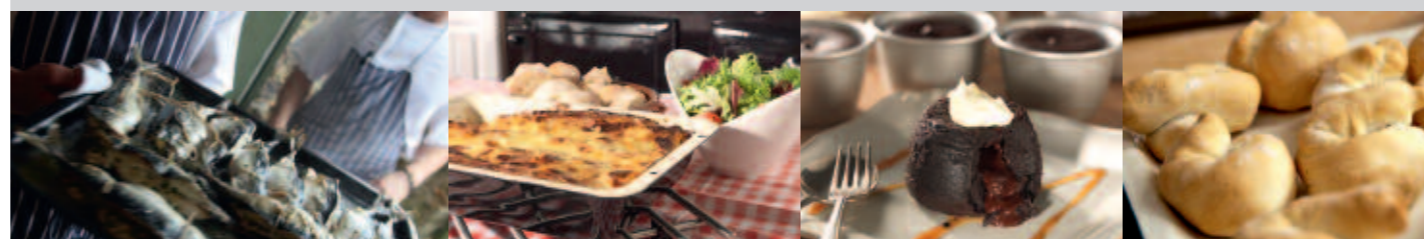


www.esse.com



Made in England.

Every item of ESSE bakeware in this catalogue is made in England.



Great British Bakeware - For those who know the difference



ESSE Engineering Limited, Long Ing, Barnoldswick, Lancashire BB18 6BN
Tel: 01282 813235 Fax: 01282 816876 Email: enquiries@esse.com Website: www.esse.com

WE ARE CONSTANTLY DEVELOPING AND IMPROVING OUR PRODUCTS. WE RESERVE THE RIGHT TO ALTER SPECIFICATIONS WITHOUT PRIOR NOTICE.



BM0611

"ESSE" is a trade mark of ESSE Engineering Limited © ESSE Engineering Limited 2011. All rights reserved. No part of this publication may be reproduced in any form or by any means without the prior written permission of ESSE Engineering Limited.



Great British Bakeware



For those who know the difference

Hard Anodised



Quality Bakeware



1.



2.



4.



3.



5.

ESSE baking and roasting essentials

ESSE's range of roasting tins and baking trays has been specifically designed to fit directly onto the oven runners, making them ideal for roast dinners, tray bakes and much much more. They are available in full and half sizes.



From the people who make outstanding range cookers

The ESSE name has been synonymous with range cookers for most of the last century and a half! Over the years thousands of ESSE users have requested that we provide a quality Bakeware range to accompany our gas, oil, electric and wood burning range cookers.

This new oven-safe range of hard anodised, heavy-duty black, two-tone enamelled and silver bakeware will help you to provide perfect savoury, sweet and speciality baked products, time after time - with only hot soapy water required after use, to keep this range in tip top condition.

The range includes:

Roasting dishes and trays – in a range of finishes and sizes.

Bakeware for breads and cakes – from small loaf, to cake, sponge tins and trays in a range of sizes.

Silver anodised range – pie, flan, quiche and tart tins in a range of sizes.



Each of these products comes with the ESSE assurance of quality that ensures you will have a lifetime of dependable service

– so let's get baking!

Silver Anodised Stamped "esse"



1.



2.



3.



4.



5.



6.



7.



8.



9.



10.

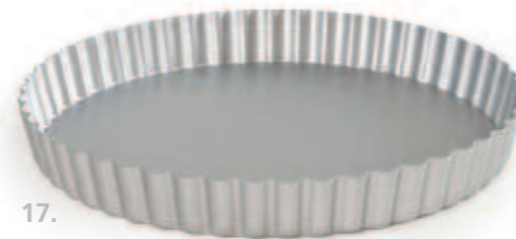


11.



12.

13.



17.



18.



19.



14.

15.

16.



Silver Anodised Stamped "esse"

- 3" Yorkshire pudding mould
Order code: KU-024
- 3.5" pudding mould
Order code: KU-025
- 4" pudding mould
Order code: KU-026
- 5" pudding mould
Order code: KU-027

- 6" pudding mould
Order code: KU-028
- 7" pudding mould
Order code: KU-029
- 8" Charlotte russe pudding mould
Order code: KU-030
- Jam funnel
Order code: KU-031

- Savarin mould 4" diameter
Order code: KU-032
- Savarin mould 8" diameter
Order code: KU-033
- Loose base cake tray 8 x 3.25"
Order code: KU-034
- Loose base cake tray 10 x 3.75"
Order code: KU-035

- Loose base cake tin 12 x 4"
Order code: KU-036
- Loose base sandwich tin 8 x 1.5"
Order code: KU-037
- Loose base sandwich tin 10 x 1.5"
Order code: KU-038
- Loose base sandwich tin 12 x 1.5"
Order code: KU-039

- Fluted flan tin 9 x 1.25"
Order code: KU-040
- Mini loaf pan 4.5 x 8 x 3cm
Order code: KU-041
- Even bake Loaf pan 2lb
Order code: KU-042

Hard Anodised

- | | | |
|--|--|--|
| 1. 44 x 34 x 2cm large tray
Order code: KU-019 | 3. 34 x 24 x 2cm small dish
Order code: KU-021 | 5. 34 x 24 x 5.5cm half dish
Order code: KU-023 |
| 2. 34 x 24 x 3.5cm Brownie tin
Order code: KU-020 | 4. 44 x 34 x 5.5cm full dish
Order code: KU-022 | |